

## DataMind AI™

### Unlocking Efficiency, Reliability and Safety for Mining Operations

#### Used and trusted by

GLENCORE



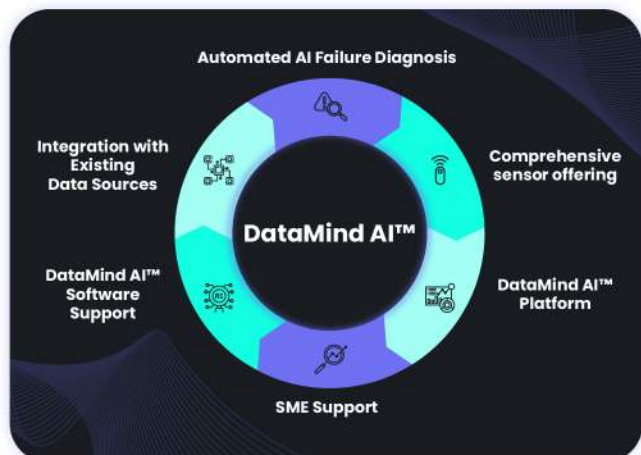
NETZSCH



SIEMENS  
energy

#### We've got you covered

DataMind AI™ is an all-in-one predictive maintenance platform designed to optimize mining operations. Powered by advanced AI Sensor Fusion technology, it delivers real-time insights, precise root cause analysis, and clear prescriptive recommendations to **prevent downtime, increase throughput, extend machine lifespan and boost staff safety.**



#### Optimize maintenance KPIs with DataMind AI™

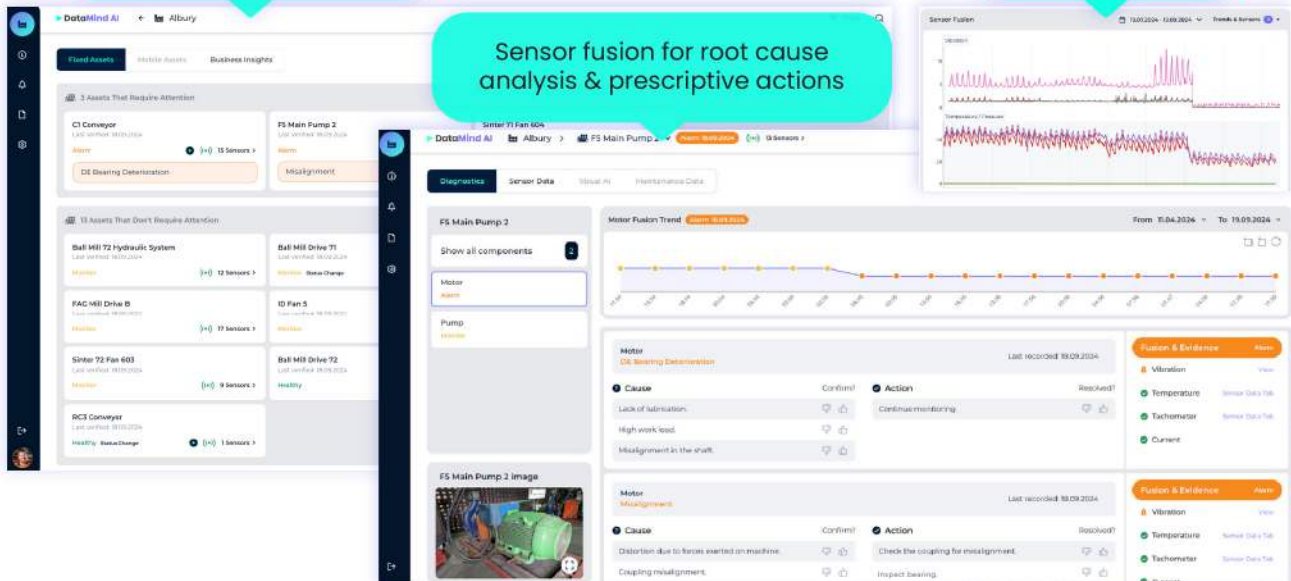


# DataMind AI™ platform

Complete online visibility of the site equipment

Sensor data

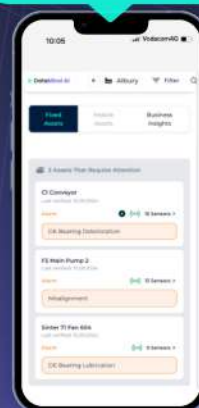
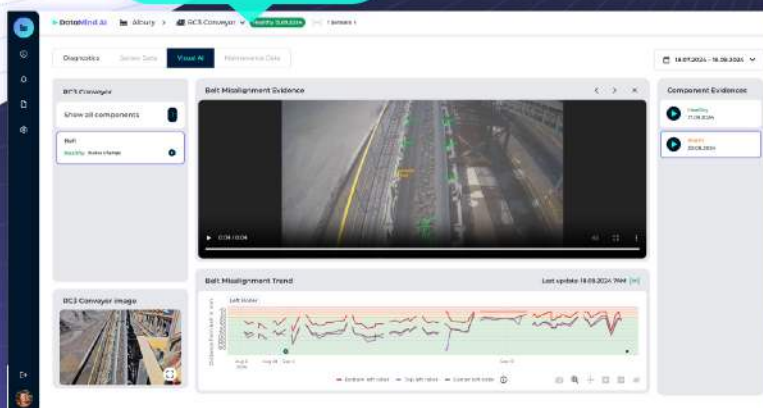
Sensor fusion for root cause analysis & prescriptive actions



Visual AI

Mobile app

Real-time alerts via SMS & Email



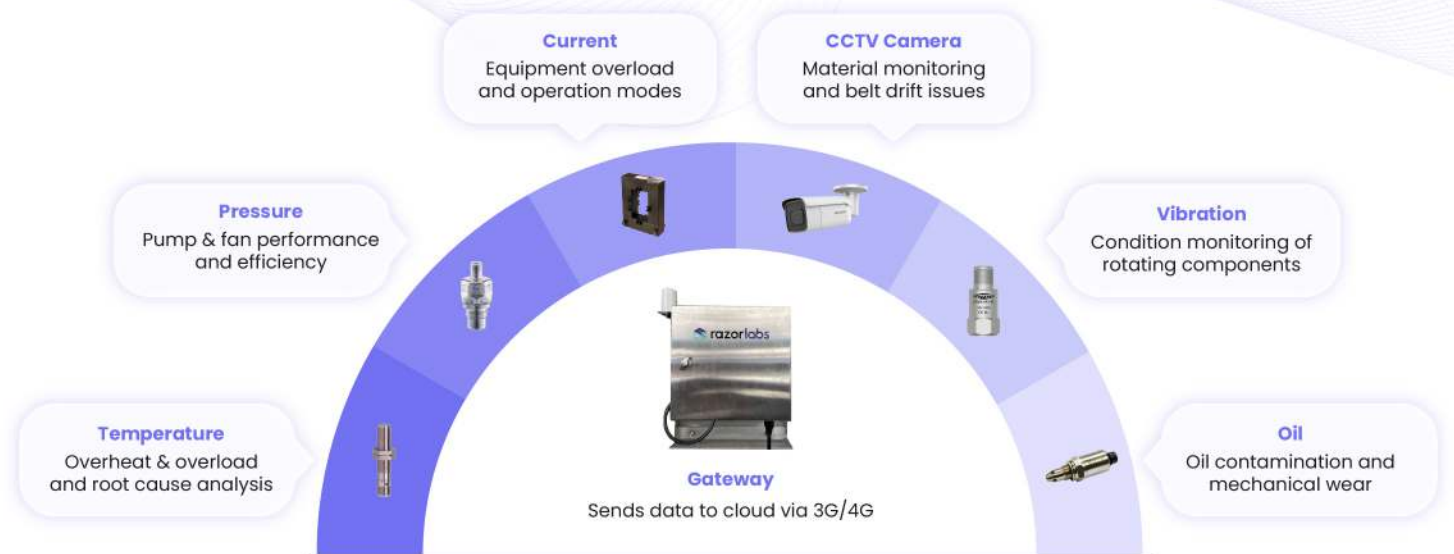
- Complete online visibility of the site equipment
- Sensor fusion for failure root cause analysis and prescriptive actions
- Real-time 24/7 health visibility
- Fixed & mobile equipment

- Maintenance efficiency & planning
- Full access to raw-data
- Early warning & critical notifications
- Business insights



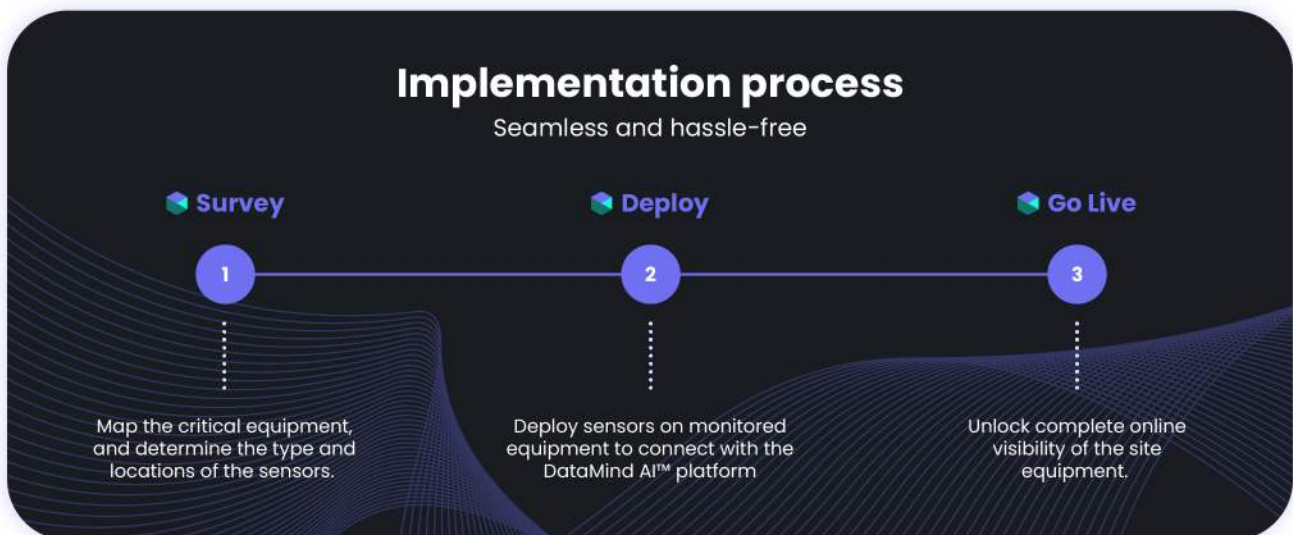
# Comprehensive sensor offering

Full failure coverage with accurate diagnostics



## Implementation process

Seamless and hassle-free



## Monitored machines

### Crushing & Screening

- Primary Jaw & Gyratory Crushers
- Secondary Cone & Crushers
- Screens
- Vibrating Grizzlies
- Feeders

### Grinding & Milling

- SAG & AG Mills
- Ball Mills
- Rod Mills
- Mill Motors & Gearboxes
- Pinions & Trunnions

### Bulk Material Handling

- Conveyors
- Stackers
- Reclaimers
- Ship Loaders
- Belt Feeders

### Slurry & Water Pumping

- Slurry Pumps
- Process Water Pumps
- Cyclone Feed Pumps
- Tailings Pumps
- Underflow Pumps

### Flotation & Separation

- Flotation Cells
- Agitators
- Froth Pumps
- Air Blowers
- Scrubbers

### Utilities & Plant Services

- Cooling Towers
- Compressors
- Air Dryers
- Induced & Forced Draft Fans
- Dust Collectors

## About Razor Labs

Razor Labs is revolutionizing the mining industry with DataMind AI™, its cutting-edge all-in-one AI solution for predictive maintenance. By combining sensor fusion with advanced analytics, the company empowers mining operations to prevent critical machine failures, maximize equipment reliability, enhance safety, and reduce operational costs.

As a publicly listed company (TASE: RZR), Razor Labs partners with leading mining companies worldwide to drive digital transformation across their sites. The company maintains a global presence with offices in **Tel Aviv, Perth, Sydney, New York, Bogota, and Johannesburg.**

For more information or to request a demo, visit [www.razor-labs.com](http://www.razor-labs.com) or email [discover@razor-labs.com](mailto:discover@razor-labs.com)

 **CBINSIGHTS**

One of the world's most innovative mining tech companies



Industrial IoT.  
Product of the  
**YEAR**  
**2025**

**Mining Technology  
EXCELLENCE  
AWARDS**

**2024 & 2025**

R&D, Innovation,  
and Safety in  
Maintenance



**2024**

Digital Transformation  
in Mining Award  
Winner

## DataMind AI™ at a glance



**\$108,000** saved

### Crusher

Recurring oversize prevented,  
avoiding downstream downtime



**\$1,120,000** saved

### Stacker

Critical boom pulley failure  
prevented



**\$540,000** saved

### Compressor

Critical gearbox failure  
prevented via early detection



**\$234,000** saved

### Centrifuge

Drum imbalance resolved  
within 2 days



**\$195,000** saved

### Pump

Performance drop detected  
through curve monitoring



**\$648,000** saved

### Ball Mill

Identified false brinelling  
missed by traditional methods

## Our partners

